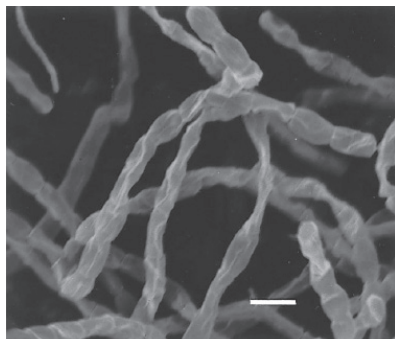


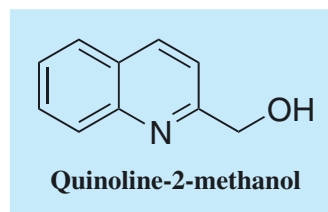
# Quinoline-2-methanol

## 1. Discovery, producing organism and structure<sup>1)</sup>

Quinoline-2-methanol was isolated from the culture broth of *Kitasatoa griseophaeus* strain PO-1227<sup>T</sup> during a chemical screening for microbial alkaloids.



*Kitasatoa griseophaeus* PO-1227<sup>T</sup>



## 2. Physical data<sup>1)</sup>

Crystalline. C<sub>10</sub>H<sub>9</sub>NO; mol wt 161.08. Sol. in MeOH.

## 3. Biological activity<sup>1)</sup>

Effect of quinoline-2-methanol on hypoglycemic activity in rat

Compound	Dose	Exp. No. (mg/kg)	Decrease of glucose level (%)
Quinoline-2-methanol HCl	100	1	23.1
		2	25.8
Tolbutamide	50	1	67.0
		2	49.5
Saline (control)		1	6.5
		2	11.5

Three Wistar male rats weighing approximately 110 g were orally administrated with the compounds. Two hours before and after the administration of drug or saline, a 0.1 ml blood sample was assayed in accordance with the modified Hoffman method<sup>2)</sup>.

## 4. References

- [110] S. Ōmura *et al.*, *J. Antibiot.* **29**, 797-803 (1976)
- W. S. Hoffman, *J. Biol. Chem.* **120**, 51-55 (1937)